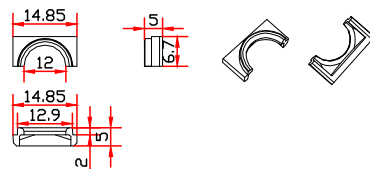
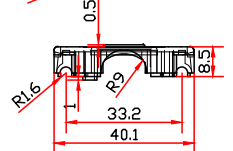
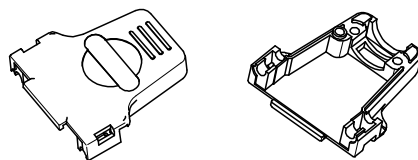
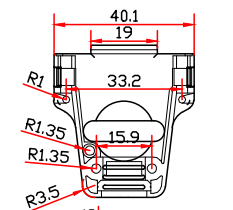
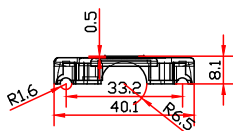
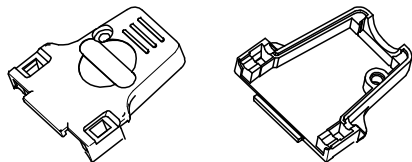
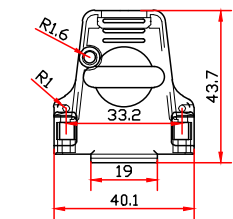
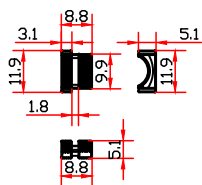


REV.	ECN. NO.	APPD.
A	WL-20-008	Jerry. Zhang

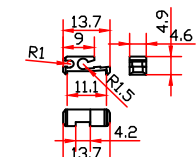


装配 (附件如下)

项目	名称	数量	材质
1	Hoods(Lid and base)	2PCS	Zinc Alloy
2	Screws For Hood	2PCS	Iron
3	Screw For Clamp	2PCS	Iron
4	Locking Screw	2PCS	Iron
5	Cable Clamp	1PCS	Zinc Alloy
6	Strain Relief	1PCS	Zinc Alloy
7	Catch Spring(Right and Left)	2PCS	ABS
8	Rubber Bushing	1PCS	PVC
9	Cable Reducation Plate	2PCS	Zinc Alloy

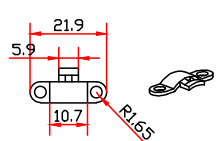


Strain Relief

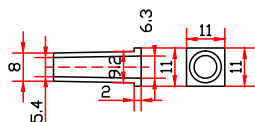
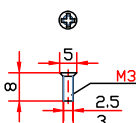
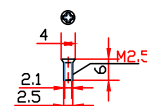


Catch Spring(Right and Left)

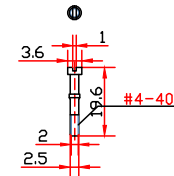
Cable Reducation Plate



Cable Clamp



Rubber Bushing



X.±	X.±	UNITS	mm	NAME(INTENDED USE)
.X± 0.3	.X±	MAT'L		D-Sub 15Pin 180度金属壳 长螺杆
.XX± 0.20	.XX±	SEE NOTES		PART NO.(INTENDED USE)
.XXX±	.XXX±	FINISH		WL23-5701
THESE DRAWINGS AND SPECIFICATIONS ARE THE PROPERTY OF INCEL INTERCONNECT TECHNOLOGY LIMITED, AND SHALL NOT BE REPRODUCED, COPIED OR USED IN ANY MANNER WITHOUT THE PRIOR WRITTEN CONSENT OF INCEL INTERCONNECT TECHNOLOGY LIMITED.				APPD: yuan. wu 08/16~20
				CHKD: lei. wang 08/16~20
				DRAW: min. sun 08/16~20
Q'TY				DWG NO.: WL23-5701-0013



CLASS: CONFIDENTIAL SECRET GENERAL

TITLE: CONN DRAWING

DWG NO.: WL23-5701-0013

SCALE	SHEET	REV.
N/A	1/1	A