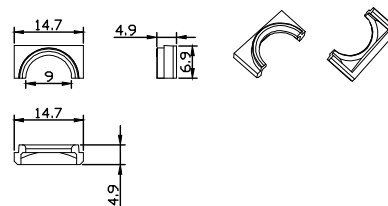
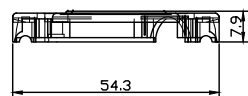
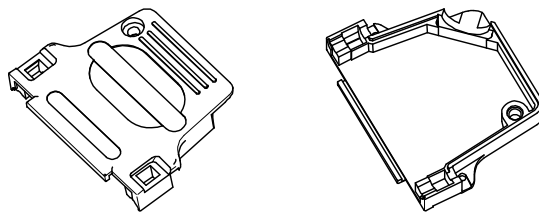
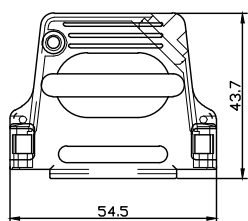
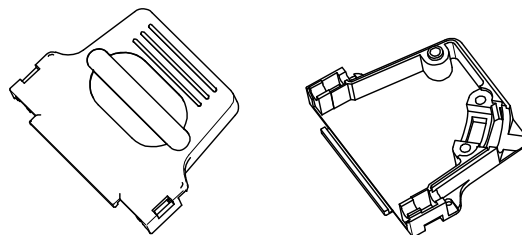
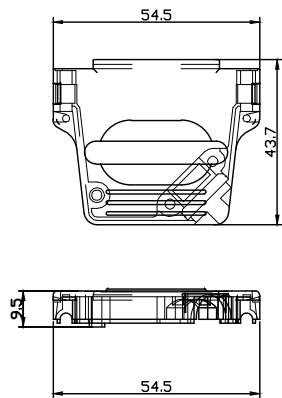
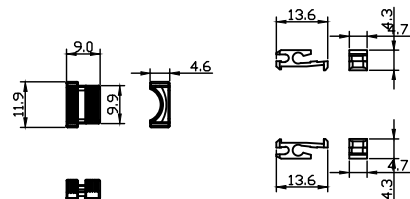
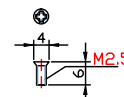


REV.	ECN. NO.	APPD.
A	WL-20-008	Jerry. Zhang



Cable Reducation Plate

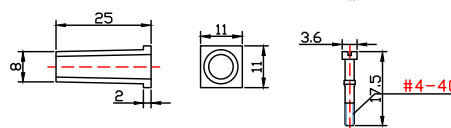


Strain Relief

Catch Spring(Right and Left)



Cable Clamp



Rubber Bushing

装配（附件如下）

项目	名称	数量	材质
1	Hoods(Lid and base)	1SET	Zinc Alloy
2	Screws For Hood	1PCS	Stainless steel
3	Screw For Clamp	2PCS	Stainless steel
4	Locking Screw	2PCS	Stainless steel
5	Cable Clamp	1PCS	Zinc Alloy
6	Strain Relief	1PCS	Zinc Alloy
7	Catch Spring(Right and Left)	2PCS	ABS
8	Rubber Bushing	1PCS	PVC
9	Cable Reducation Plate	2PCS	Zinc Alloy

X.±	X.±	UNITS	mm
.X± 0.3	.X±	MAT'L	
.XX± 0.20	.XX±	SEE NOTES	
.XXX±	.XXX±	FINISH	
<small>THESE DRAWINGS AND SPECIFICATIONS ARE THE PROPERTY OF INCEL INTERCONNECT TECHNOLOGY LIMITED, AND SHALL NOT BE REPRODUCED, COPIED OR USED IN ANY MANNER WITHOUT THE PRIOR WRITTEN CONSENT OF INCEL INTERCONNECT TECHNOLOGY LIMITED.</small>		Q'TY	

NAME(INTENDED USE)		D-Sub 25Pin 45度金属壳 短螺钉	
PART NO.(INTENDED USE)		WL23-5701	
APPD:		yuan. wu 08/16~20	
CHKD:		lei. wang 08/16~20	
DRAW:		min. sun 08/16~20	

WEILLEN

CLASS:
 CONFIDENTIAL SECRET GENERAL

TITLE: CONN DRAWING

DWG NO.: WL23-5701-0005

SCALE	SHEET	REV.
N/A	1/1	A